

Human pro-GDF15 Protein; His Tag

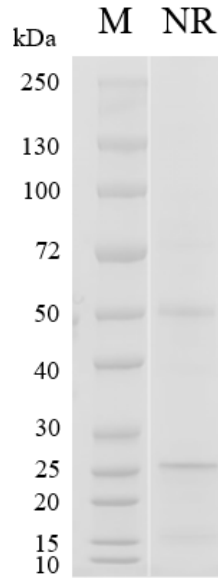
Product Information

Product Name	Human pro-GDF15 Protein; His Tag
Storage temp.	Store at $\leq -70^{\circ}\text{C}$, stable for 6 months after receipt. Recommend to aliquot the protein into smaller quantities for optimal storage. Please minimize freeze-thaw cycles.
Catalog# / Size	GM-87875RP-100 / 100 μg GM-87875RP-1000 / 1 mg

Protein Information

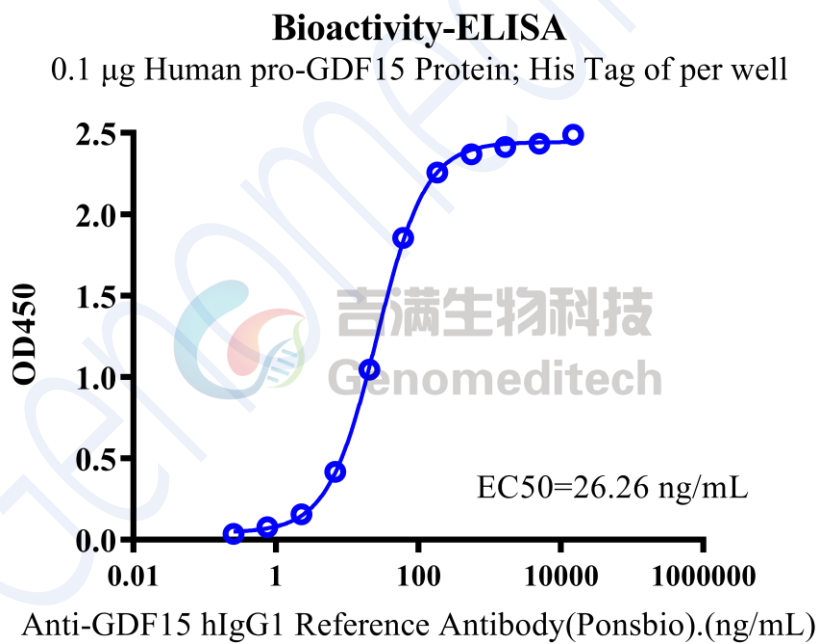
Alternative Names	GDF-15, MIC-1, MIC1, NAG-1, PDF, PLAB, PTGFB, NRG-1
Source	Human pro-GDF15 Protein; His Tag (GM-87875RP) is expressed from CHO cells. It contains AA Leu 30 - Ile 308 (Accession # Q99988-1). This protein carries a His tag at the C-terminus.
Purity	> 90% as determined by SDS-PAGE
Endotoxin	< 1 EU/ μg , determined by LAL gel clotting assay
Predicted Mol Mass	13.0 kDa (mature) and 31.4 kDa (pro)
Formulation	Supplied as a 0.2 μm filtered solution of PBS, pH7.4.
Description	<p>GDF-15 is a cytokine protein belonging to the TGF-β superfamily. It is widely expressed in the human body, including in tissues such as the liver, heart, kidneys, lungs, intestines, muscles, brain, and pancreas. The expression of GDF-15 is regulated by various physiological and pathological conditions, such as inflammation, tumors, cardiovascular diseases, and metabolic disorders.</p> <p>GDF-15 plays an important role in physiological processes such as cell proliferation, apoptosis, inflammation, and metabolism. It is considered an important inflammatory marker, playing a crucial role in inflammatory responses and immune reactions. Additionally, GDF-15 has been found to be closely associated with the occurrence, development, and metastasis of tumors, affecting tumor growth by regulating cell proliferation, apoptosis, invasion, and metastasis pathways. In recent years, research has revealed that GDF-15 is also linked to many other diseases such as cardiovascular diseases, metabolic syndrome, diabetes, and kidney diseases. Therefore, GDF-15 has become a research hotspot and is widely used in aspects like disease diagnosis, prognosis assessment, and treatment monitoring.</p>

SDS-PAGE



On SDS-PAGE non-reducing (NR) condition. The gel was stained overnight with Coomassie Blue. The purity of the protein is greater than 90%.

Bioactivity-ELISA



Human pro-GDF15 Protein; His Tag (Catalog # GM-87875RP) was immobilized at 1 μ g/ml (100 μ L/well). Increasing concentrations of Anti-GDF15 hIgG1 Reference Antibody (Ponsbio) (Catalog # GM-87500MAB) were added.